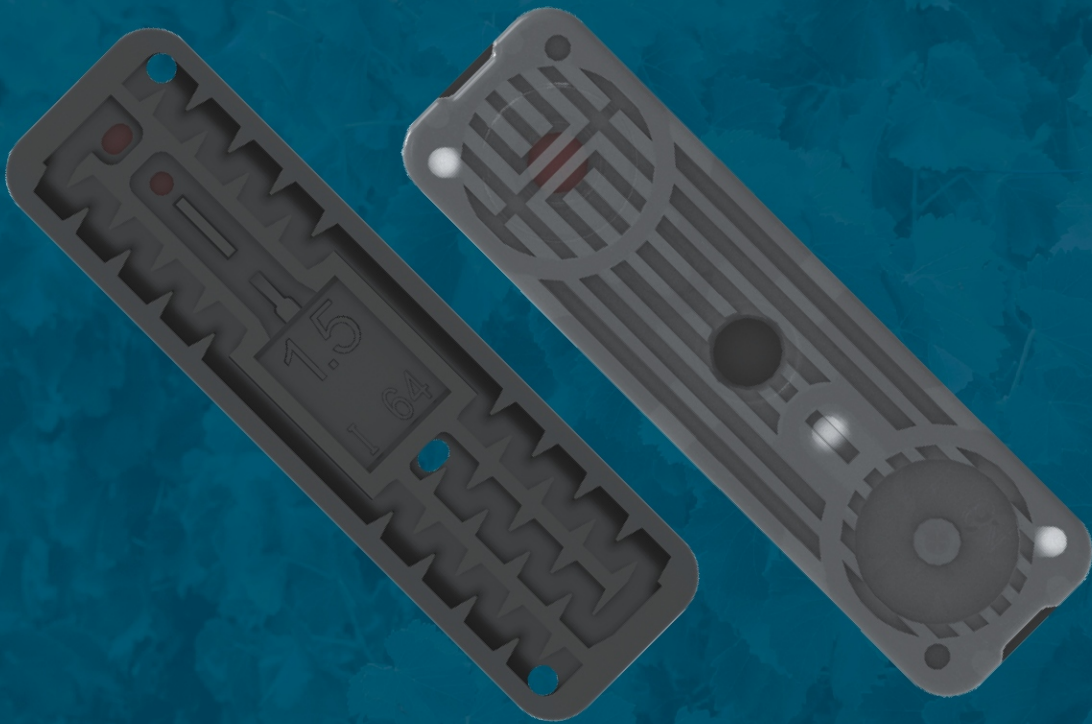




Advanced  
Automation  
Systems



# Cyclone PC

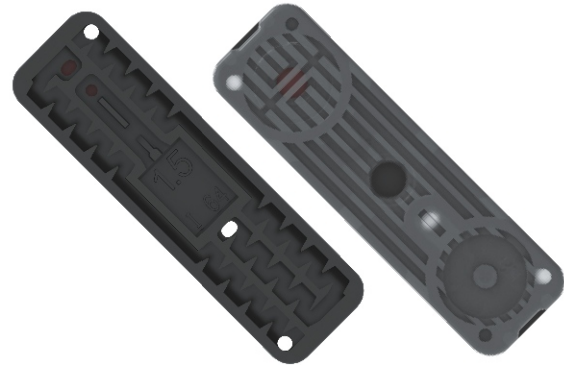
Flat PC Emitter

Ultra slim high-tech concept, laser welded with long-life material that fits any hose diameter. High accuracy, consistent clog-free performance

# Cyclone PC

## Flat PC Emitter

**Ultra slim high-tech concept, laser welded with long-life material that fits any hose diameter. High accuracy, consistent clog-free performance.**



### Pressure Compensating (PC)

PC emitters incorporate a silicone membrane which enables the delivery of precise and equal amounts of water over a broad pressure range. Cyclone PC emitters are designed for precision irrigation needs and inclined topography.

### Laser Welding Technology

We use state of the art laser welding technology for sealing the two parts of the emitter. With our investments in the latest technology in emitter assembly, we ensure flawless operation under any condition. Moreover, this welding method prevents leaks in the event of extremely high pressures or in the event of opening of the emitter during installation and/or retraction of the dripline in the field.

### Drain (D), Non-Drain (ND) and Anti-Siphon (AS) Options

The Anti-Siphon (AS) system is a specially designed mechanism that prevents suction of dirt and impurities into the emitter. The AS feature enables Cyclone PC to be installed underground (SDI), perfectly maintaining its irrigation characteristics and its multi-year durability.

With the Non-Drain system of Cyclone PC, the dripline remains full of water during irrigation intervals, ensuring immediate and uniform irrigation along the dripline.

ND emitters eliminate drainage and refill effect, and improve efficiency in pulse irrigation. In order to achieve the ND function, the emitter opens at 0,40 bar and closes at 0,25 bar.

### Emitter Characteristics

Wide range of flow rates from 1,0 to 3,8 l/h. Designed for a wide range of wall thicknesses starting from 12 mil up to 47 mil (0,3 mm - 1,2 mm).

Suitable for driplines with internal diameter (ID) from 13,5 mm and up.

State of the art flat PC, AS, ND emitter technology.

Continuous self cleaning mechanism ensures non-clogging uninterrupted operation.

Excellent emission uniformity.

Excellent flow coefficient.

Low friction losses due to the ultra slim design of the emitter.

Injected molded emitters with excellent Coefficient of Variation (CV).

### Product Applications

Precision irrigation

Uneven terrains

Greenhouses

Orchards

Pulse irrigation

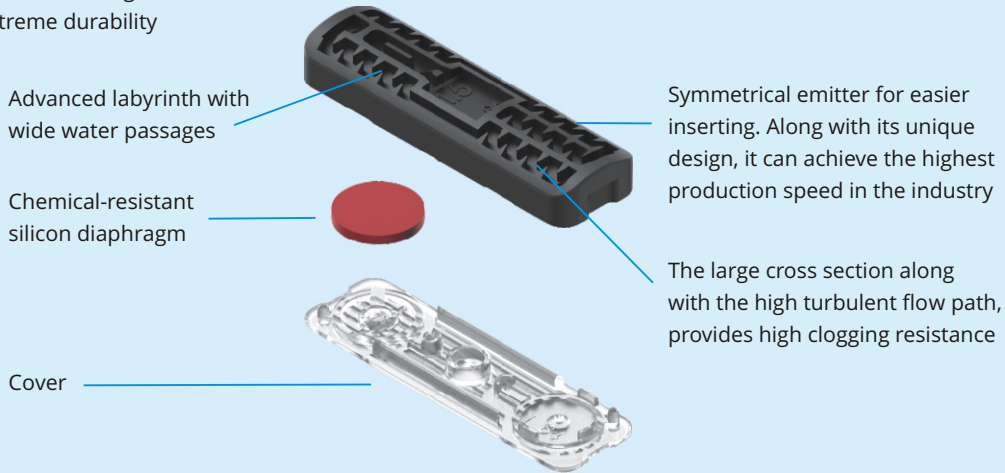
Suitable for both on surface and subsurface installations

## Cyclone PC Design Characteristics

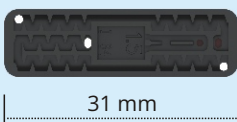
### Laser Welding Technology

Cyclone PC is the only laser welded emitter available in the industry, ensuring perfect operation since it maintains its design characteristics and extreme durability

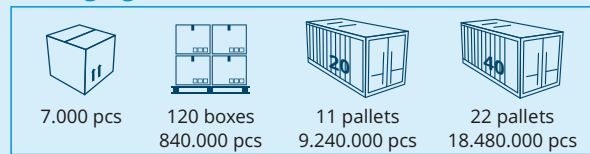
Cyclone PC emitters are tested from both CIT and Irstea institutes and achieved the highest ranking for CV, emission uniformity, flow accuracy and clogging resistance



### Actual Size



### Packaging



## Cyclone PC Emitter Specifications

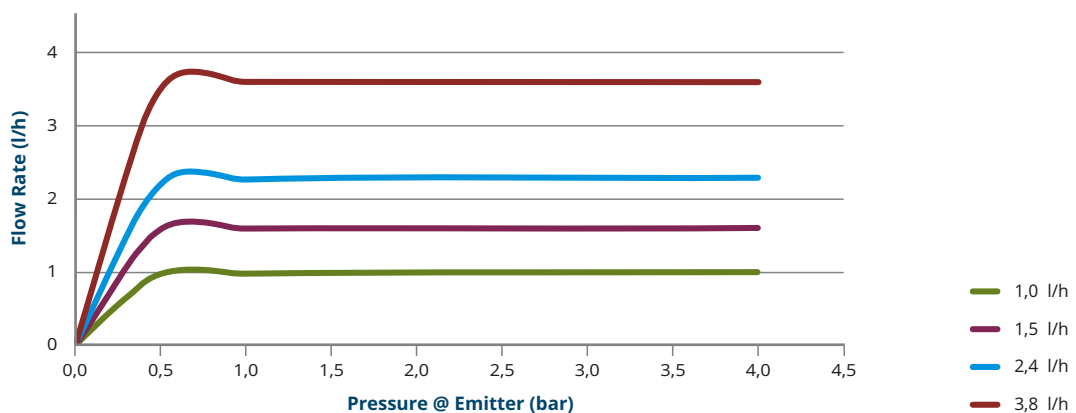
Nominal Flow Rate (l/h)	Constant k (bar)	Exponent (x)	Coefficient of Variation CV (%)	Water Passage Width x Depth x Length (mm)	Filtration Area (mm <sup>2</sup> )	Recommended Filtration (mesh/micron)
1,0	1,0	0,0	3,6	0,82 x 0,76 x 139	37,37	150/100
1,5	1,6	0,0	3,6	1,06 x 0,85 x 132	37,37	120/130
2,4	2,3	0,0	3,5	1,19 x 0,90 x 89,6	37,37	120/130
3,8	3,6	0,0	3,5	1,30 x 0,90 x 78,7	37,37	120/130

Pressure range: 0,5 - 3,5 bar

Opening pressure: 0,40 bar

Closing pressure: 0,25 bar

## Cyclone PC Emitter Flow Curves





**Showroom:**

10 Andrea Araouzou str.,  
3056 Limassol, Cyprus

**Head Office:**

12 Andrea Araouzou str.,  
3056 Limassol, Cyprus

**Factory:**

9 Fytion str.,  
3056 Limassol, Cyprus

T: + 357 25 399962

F: +357 25 399963

[aas@aasystems.eu](mailto:aas@aasystems.eu)